

ABSALOM

The Stealer of Hearts

ABSALOM

The Stealer of Hearts

- 1 The son of Maacah - A house divided
- 2 The Heart of the King - The exiled son returns
- 3 The Stealer of Hearts** - The art of rebellion
- 4 Absalom's Place - The way of all men



AFTER THIS MANNER ...

1. IMPORTANCE v1

6. INGRATIATE v5

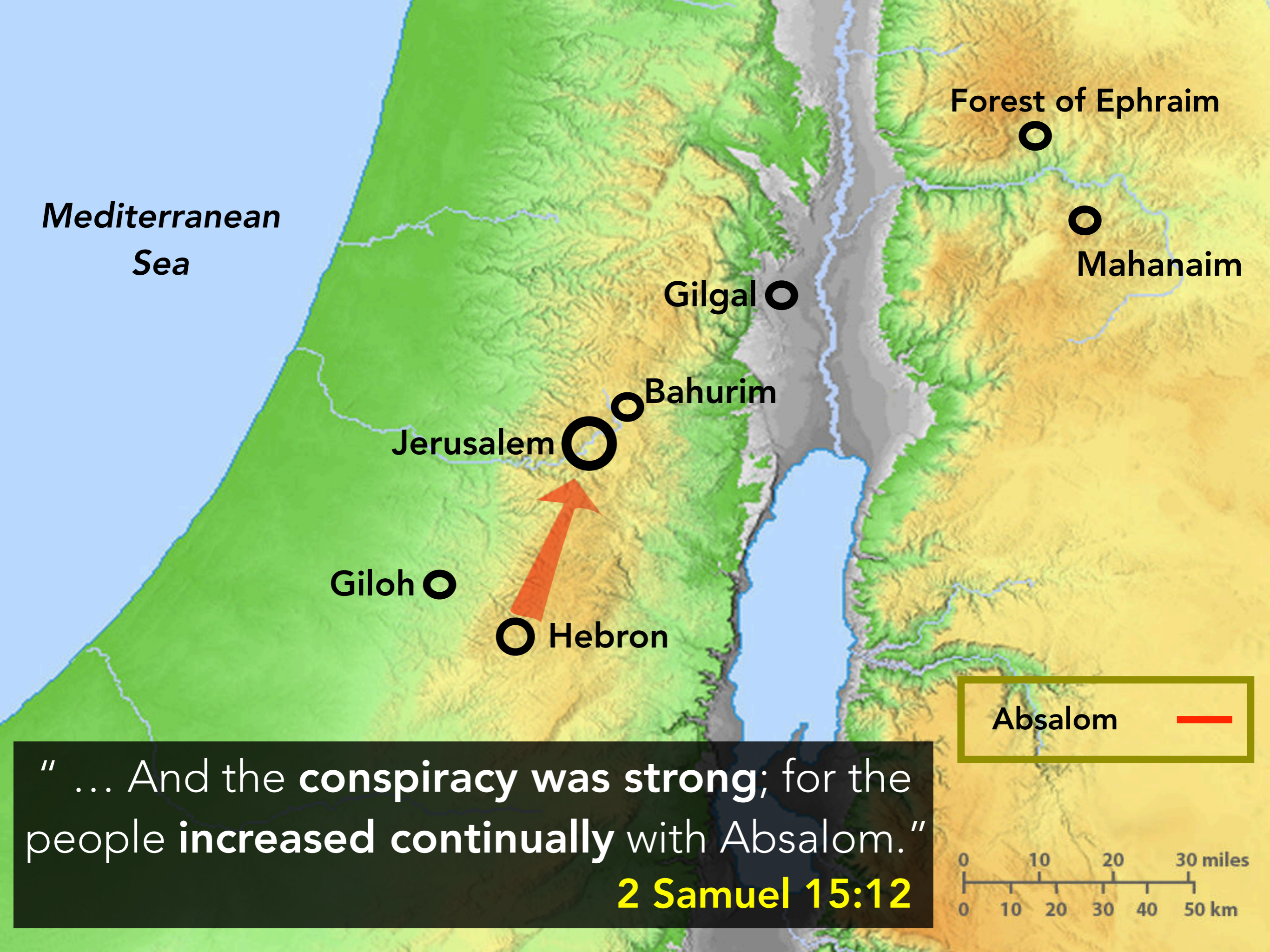
2. INITIATIVE v2

5. INSINUATE v4

3. INQUIRE v2

4. INTERVENE v3

2 Samuel 15



*Mediterranean
Sea*

Forest of Ephraim

Mahanaim

Gilgal

Bahurim

Jerusalem

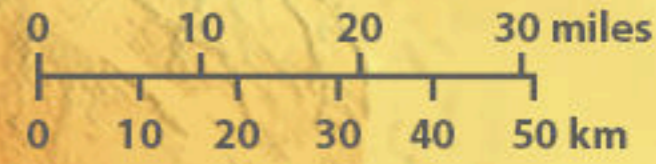
Giloh

Hebron

Absalom

“ ... And the conspiracy was strong; for the people increased continually with Absalom.”

2 Samuel 15:12



AHITHOPHEL

- A man greatly renowned for his **wisdom**
- David's most trusted **councillor**
- A man David considered to be his **equal**
- A familiar **intimate friend**
- **Vengeful, unforgiving, proud yet pragmatic**
- **A Traitor**

12 For it was not an enemy that reproached me; then I could have borne it: neither was it he that hated me that did magnify himself against me; then I would have hid myself from him:

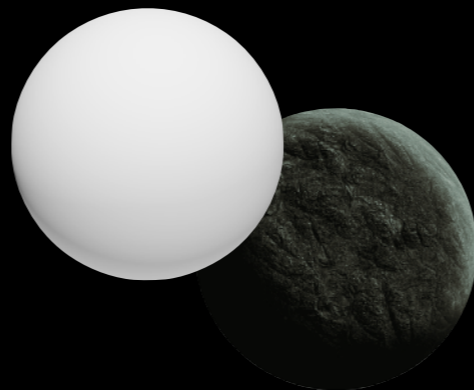
13 But it was **thou**, a man mine **equal**, my **guide**, and mine **acquaintance**.

14 We took sweet counsel together, and walked unto the house of God in company.

Psalms 55:12-14

AHITHOPHEL

23 And the counsel of Ahithophel, which he counselled in those days, was as if a man had enquired at the **oracle of God**: so was all the counsel of Ahithophel both with David and with Absalom. **2 Samuel 16:23**



AHITHOPHEL

- A man greatly renowned for his **wisdom**
- David's most trusted **councillor**
- A man David considered to be his **equal**
- A familiar **intimate friend**
- **Vengeful, unforgiving, proud yet pragmatic**
- **A Traitor**

12 For it was not an enemy that reproached me; then I could have borne it: neither was it he that hated me that did magnify himself against me; then I would have hid myself from him:

13 But it was **thou**, a man mine **equal**, my **guide**, and mine **acquaintance**.

14 We took sweet counsel together, and walked unto the house of God in company.

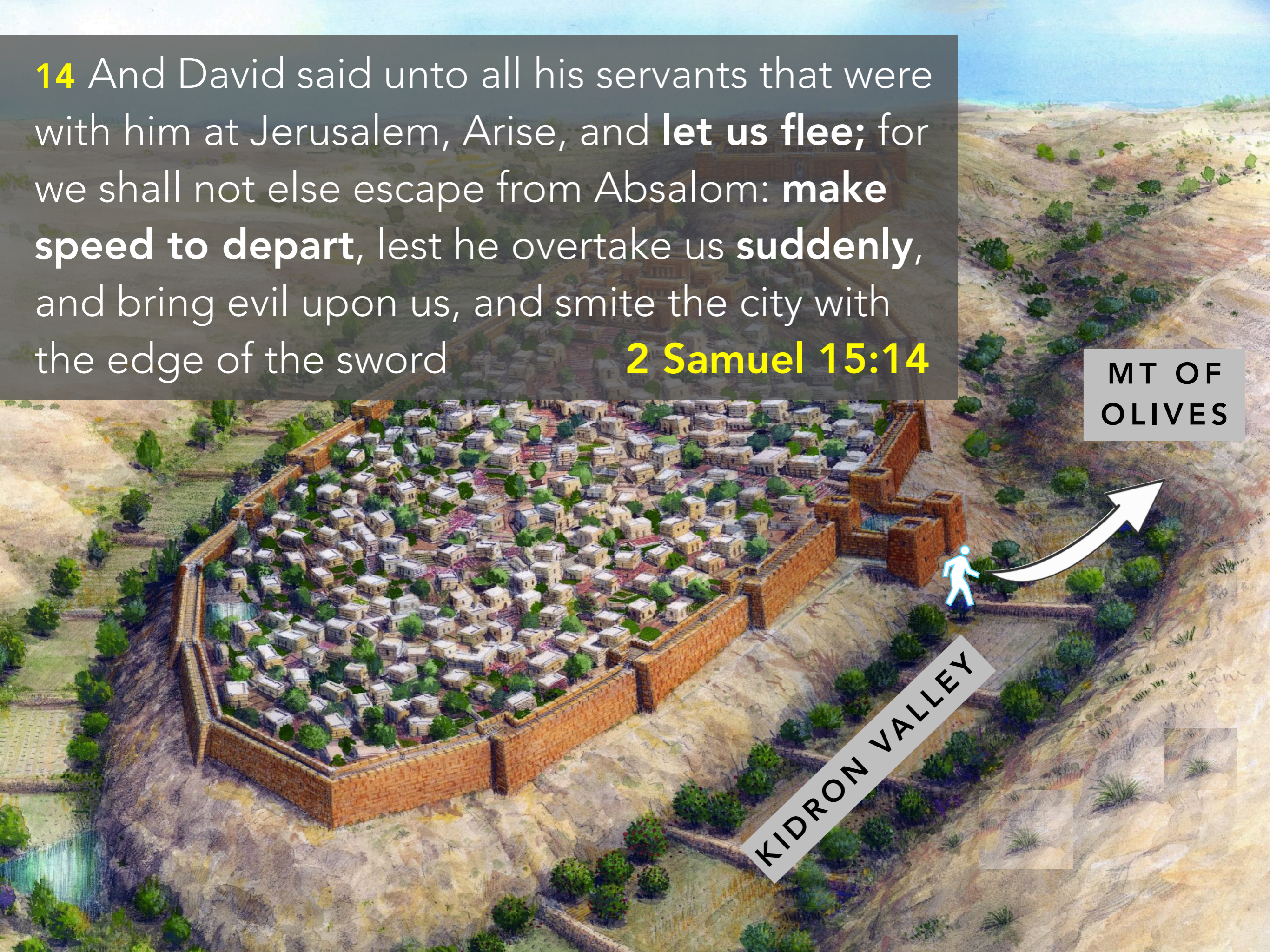
Psalms 55:12-14

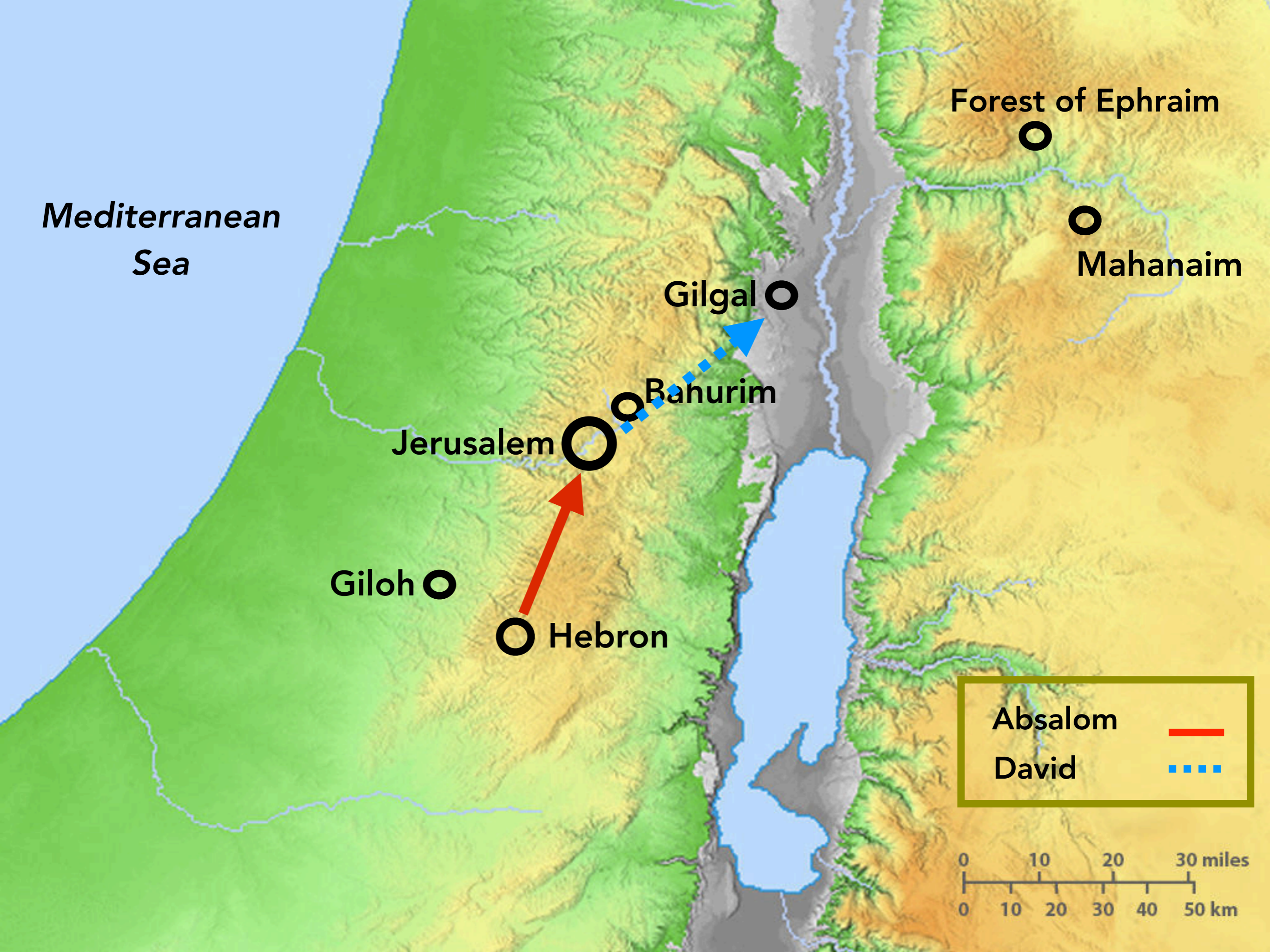
14 And David said unto all his servants that were with him at Jerusalem, Arise, and **let us flee**; for we shall not else escape from Absalom: **make speed to depart**, lest he overtake us **suddenly**, and bring evil upon us, and smite the city with the edge of the sword

2 Samuel 15:14

MT OF OLIVES

KIDRON VALLEY





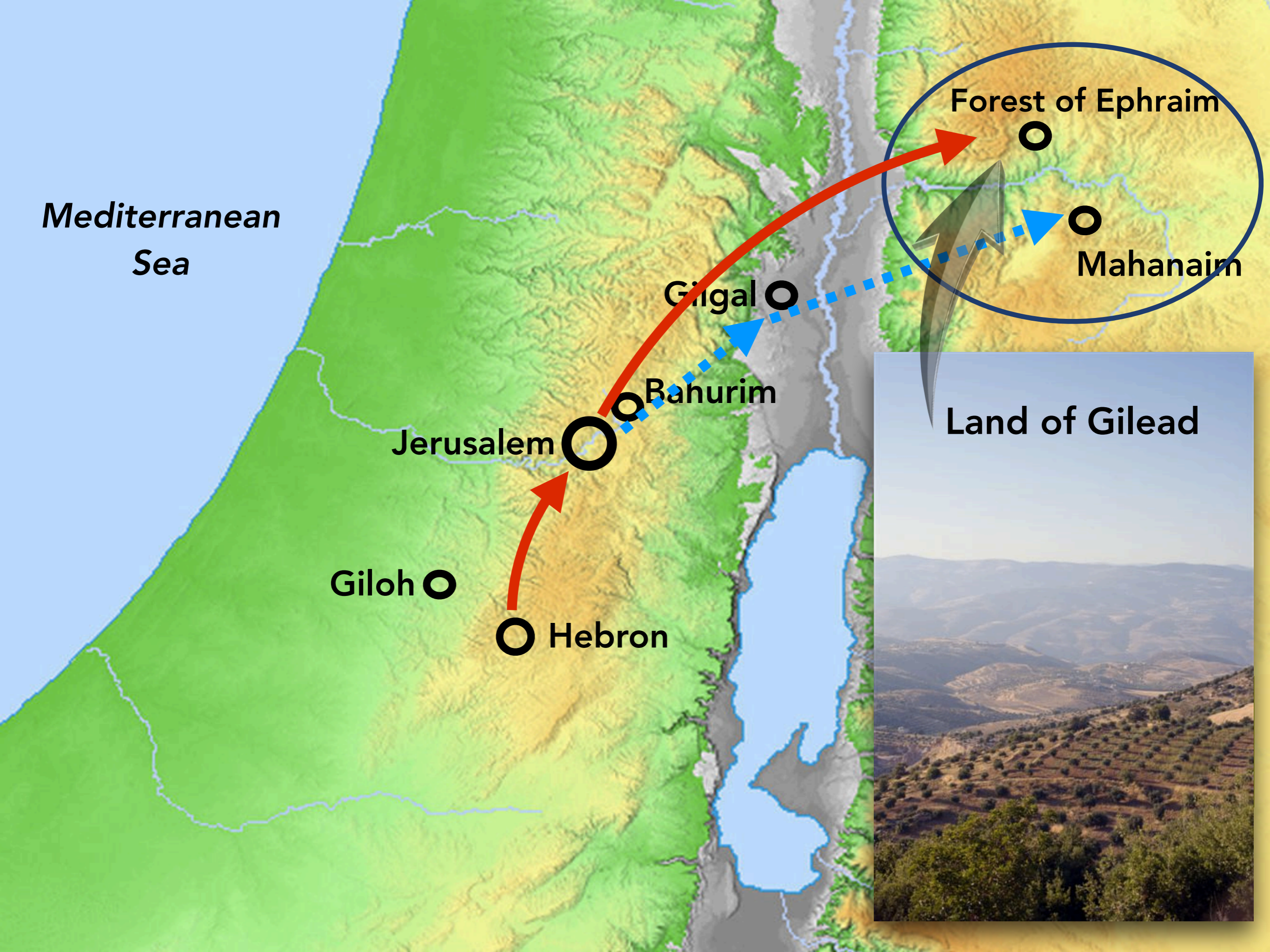
23 And all the country **wept** with a loud voice,
and all the people passed over: the king also
himself passed over the brook Kidron, and all the
people passed over, toward the way of the
wilderness

2 Samuel 15:23



MT OF
OLIVES

KIDRON VALLEY



**Mediterranean
Sea**

Forest of Ephraim

Mahanaim

Gilgal

Bahurim

Jerusalem

Giloh

Hebron

Land of Gilead

ABSALOM

The Stealer of Hearts

The mind that **sympathizes with dissatisfaction** and strife will inevitably manifest itself in a **rebellious spirit**

Dependancy on God creates a **humility of spirit** and is demonstrated by the **mercy and forgiveness** we show to others ... a **dependancy on self** is demonstrated by a **vengeful and prideful spirit** and is shown when we mistreat others

God hears the prayers of the faithful and **delivers them from evil**